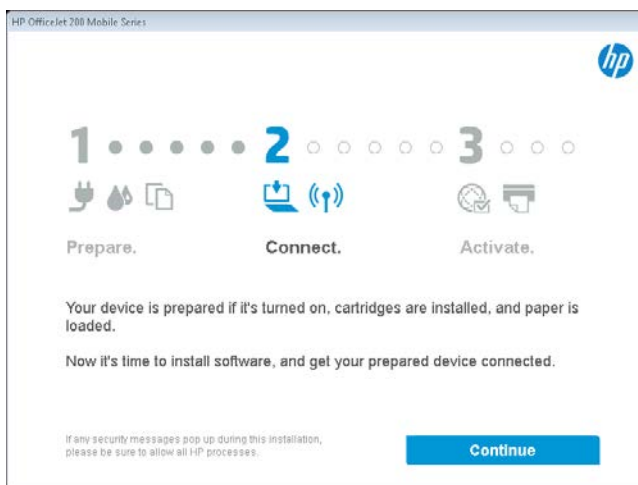


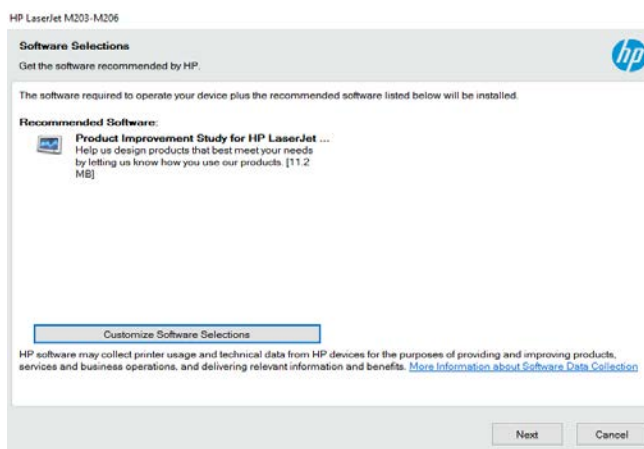


# TROY M203 MICR PRINTER INSTALLATION GUIDE

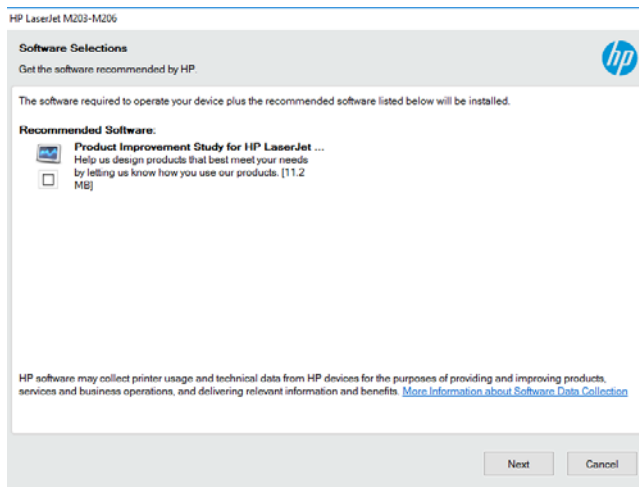
1. Ensure the TROY M203 MICR printer is **powered on**. The MICR toner cartridge is also pre-installed from the factory. **\*Do Not plug in the USB Cable at this time\***
2. Download the **LJM203-M206\_UWWL\_LJUW\_Full\_WebPack\_1096** & **TROY M203 MICR Printer Install Instructions**
3. Right Click, **Run as Administrator** on the **LJM203-M206\_UWWL\_LJUW\_Full\_WebPack\_1096.exe**
4. Select **Continue**



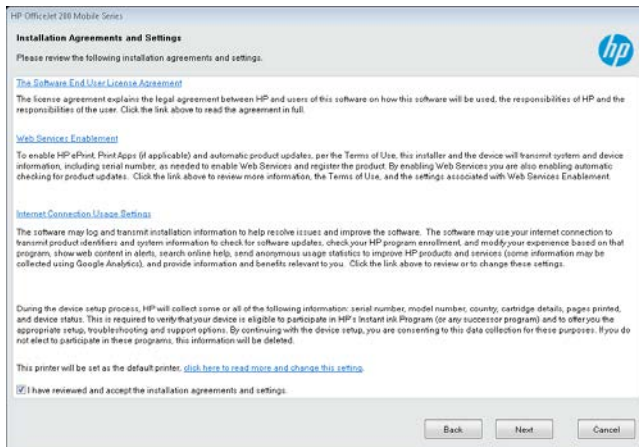
5. In the Software Selection screen, select the **Customize Software Selections** button



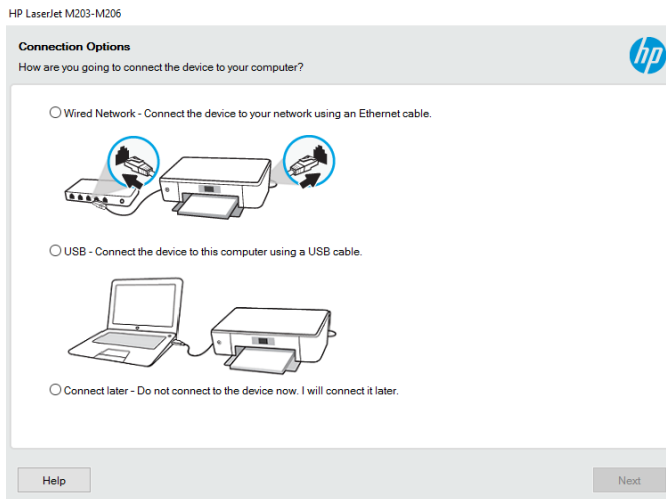
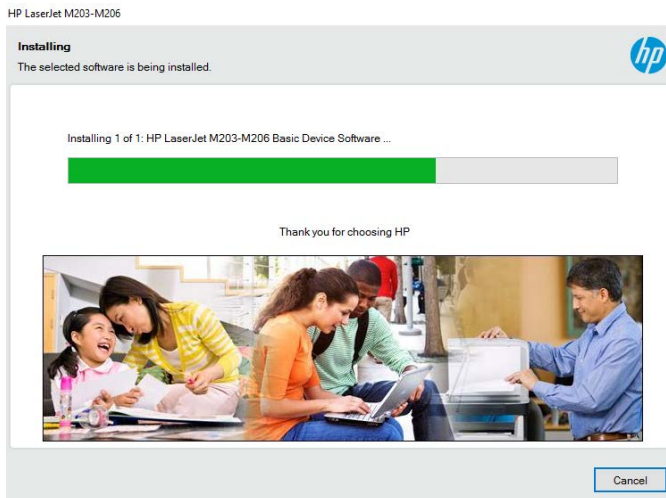
6. **Uncheck** the Recommended Software: options and click **Next**.



7. Check mark the **"I have Reviewed and Accept the installation agreement"** and click **Next**.

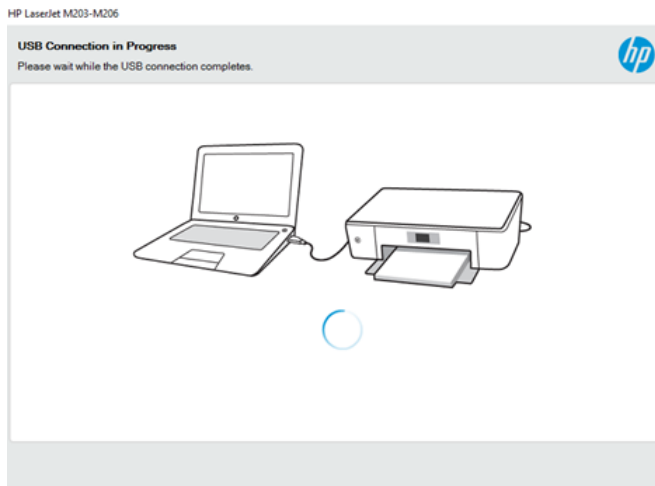


8. Allow the installation to **complete**.



9. In the Connections Options screen, select **USB** and click **Next**.

10. Connect the **USB cable** to the device and laptop/PC. The printer driver will now start installing.



11. Complete the remainder of the required configuration and click **Next** to complete the installation.

HP LaserJet M203-M206

**Information About Your Device**  
Thank you for helping HP make better products by providing this information.

How will you primarily use this device?

In a home...

In a business...

Where is the device located?

Postal Code

Device Settings  
United States  
English



hp Laptops & tablets Desktops Printers Ink & Toner Displays & accessories Business solutions Support

### Register your product

By taking just a few minutes to register, you can improve your experience with HP. Enjoy more efficient support, product support alerts, and more.

Already have an account with us? [Sign in](#) and we will complete your personal information for you. If you do not have an account, fill in the form below. You do not need an account to register your product.

Your product (HP LaserJet Pro M203dw Printer) \* Required fields

\* Serial Number:

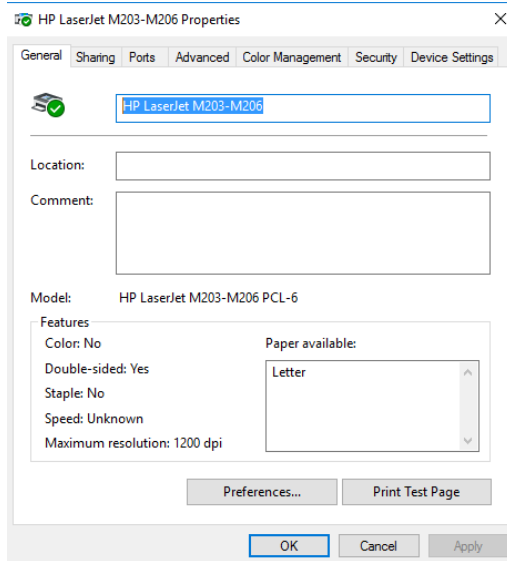
\* Select your country-language:

\* I primarily use HP products and services for:

\* Purchase date:

Purchase location:

12. In the Control Panel\Hardware and Sound\Devices and Printers on your PC, **right click** on the new **HP LaserJet M203-M206 Series** driver and select **Printer Properties**.



13. In the Printer Properties screen, click **Print Test Page** button to ensure communication with the TROY M203 MICR printer
14. To request the **TROY E-13B MICR font**, go to <https://www.troygroup.com/support/product-installation/m203-micr.html>, complete the **Request TROY M203 MICR Font** form, and click **Submit**. TROY support will review the request and email you the required **TROY E13B LJ 1200.ttf** font to be used with your TROY M203 MICR printer.
15. Once you have the **TROY E13B LJ 1200.ttf**, save the file to your PC, **right click** on the font file and select **Install**. This will install the font into your Windows Font's and allow you to then select the MICR Font in the appropriate check printing application.