

READ ME FIRST

Installation Instructions for TROY Font Card Kit

(For use with Hewlett-Packard LaserJet 4014, 4015, and 4515 Series Printers)

Introduction

Use the Hewlett-Packard CD to install the printer drivers, and use the *TROY Font Card Kit* CD to install the TROY support files. To ensure successful installation of your TROY Font Card Kit, perform the following steps in sequential order. The documentation and installation files contained on the *TROY Font Card Kit* CD will be needed in the event that your printer is reinstalled in a new location or after service has been performed.

Package Contents

- TROY Font Card (USB-based module)
- TROY Font Card Kit CD
- TROY Security Printing Solutions Information Sheet
- TROY Software License Agreement
- TROY MICR Document Template
- TROY Font Card Kit User's Guide (provided in PDF format on the CD)
- TROY MICR Basics Handbook (provided in PDF format on the CD)
- TROY Font Card Kit Quick-Start Guide (this document)



IMPORTANT: Each TROY Font Card is designed for a specific HP LaserJet printer model (4014, 4015, or 4515) and is not interchangeable between printer models.

STEP 1: Install the TROY MICR Toner Cartridge and TROY Font Card

1. Be sure to install a TROY MICR toner cartridge (purchased separately from TROY) in the same manner as described for the standard Hewlett-Packard toner cartridge (refer to your Hewlett-Packard *Getting Started Guide* for details). A MICR toner cartridge must be installed in your printer in order to print MICR documents. For best results, TROY MICR toner cartridges are recommended. TROY's high-quality MICR toner is specifically designed for the MICR fonts contained on your TROY Font Card.
2. Install the TROY Font Card USB-based module (supplied with your TROY Font Card Kit) by using the TROY Font Card installation instructions provided in the Appendix of the *TROY Font Card Kit User's Guide* in PDF format on the *TROY Font Card Kit* CD. The TROY Font Card must be installed before proceeding to Step #2 below.



STEP 2: Install the HP PCL 5e Printer Driver for Microsoft® Windows™

NOTE: Use the HP installation CD supplied with your HP 4014, 4015, or 4515 LaserJet printer to install the PCL 5e printer driver on the host computer. Some software screens may differ in appearance between operating systems.

1. Close all applications before installing the HP PCL 5e printer driver.
2. Insert the Hewlett-Packard installation CD into your computer CD-ROM drive. The CD will start automatically. Follow the on-screen prompts to perform the installation.
3. Once the HP PCL 5e printer driver has been successfully installed, remove the HP CD from your CD-ROM drive and insert the TROY Font Card Kit CD into your CD-ROM drive. Proceed to the next section.

STEP 3: Install the TROY Support Files for Microsoft® Windows™

NOTE: The Hewlett-Packard PCL 5e printer driver must be installed on the host computer prior to loading the TROY support files (refer to STEP 2 on the previous page).

The TROY metrics file contains the required escape sequences that are used to “call” the TROY security and/or optional barcode fonts installed in your TROY Security Printing Solution (via the TROY Font Card). When properly installed, the TROY metrics file will be associated with the PCL 5e printer driver used by your Hewlett-Packard printer to enable printing of the TROY MICR and security fonts installed in the printer. By associating the metrics file with the printer driver, the TROY TrueType screen fonts will be automatically replaced with the TROY MICR and security fonts at print time. If the TROY metrics file is not properly installed, the TROY TrueType screen fonts will print in place of the TROY MICR and security fonts.

Install the TROY Metrics File

1. Close all applications before installing the TROY Font support files.
2. Insert the *TROY Font Card Kit* CD into your computer CD-ROM drive.
3. From the Microsoft Windows Start menu, click on *Settings*, and then click on *Printers*.
4. Right-click on your HP 4014, 4015, or 4515 printer icon, and then click on *Properties* from the pull-down menu. If multiple printers are installed, make sure the correct printer icon is selected that corresponds to your HP printer.
5. Click on the *Device Settings* tab located at the top of the *Properties* window.
6. Click on *External Font* (under the *Font Substitution Table* category), and then click on the *Properties* button.
7. Click on the *Browse* button to open the drive selection window. Double-click on the appropriate drive letter to select the CD-ROM drive on your computer.
8. Double-click on the *Support Files* folder from the list of folders, double-click on the *PCM Files* folder, double-click on the *Domestic* folder, and then click on *OK* to close the drive selection window. For international products, double-click on the *International* folder.
9. Use the SHIFT key to select all the fonts located in the left-hand window named *TROY Auto-Protect*, *TROY PCM7*, etc., and then click on *Add* to add those fonts. If you want to add an individual font, just highlight that specific font name and click on the *Add* button. All the added fonts should be displayed in the right-hand window.

NOTE: If the barcode option was purchased, repeat Steps 8 through 10. Choose the TROY Barcode PCM file from the Barcode folder.

10. Close all remaining open windows. Please refer to the *TROY Font Card Kit User's Guide*, Section 3 – *Using TROY Fonts* before using the installed fonts.

NOTE: Windows 2000/XP operating systems do not require installation of the TROY screen fonts.

Install the TROY Screen Fonts for Windows[™] 98SE, ME Operating Systems

In addition to the TROY *printer* fonts that are permanently programmed into your TROY Font Card, the TROY *screen* fonts have been developed for display use only as a visual reference and for making positional adjustments to the MICR line. The TROY *screen* fonts display differently than the actual *printer* fonts to prevent unauthorized printing using the MICR *screen* fonts on other Windows-installed printers.

If the E-13B MICR *screen* font is used for printing, the inversely printed (white characters on black background) MICR *screen* font will not be readable by the bank reader/sorter machines. The uniquely displayed *screen* fonts ensure that the MICR font printed on your MICR documents is generated by a TROY Security Printing Solution and not from a Windows TrueType[™] *screen* font. The TROY *screen* fonts are provided on the **TROY Font Card Kit** CD supplied with your TROY Font DIMM Kit.

NOTE: Windows 2000/XP operating systems do not require installation of the TROY screen fonts.

1. Close all applications before installing the TROY support files.
2. Insert the **TROY Font Card Kit** CD into your computer CD-ROM drive.
3. From the **Start** menu, click on **Settings**, and then click on **Control Panel**.
4. Double-click on the **Fonts** folder icon.
5. Click on **File**, and then click on **Install New Font...** A new window labeled **Add Fonts** will open and then a Windows Explorer-style window will open.
6. Click on the down-arrow in the **Drives** box to select the CD-ROM drive on your computer. Double-click on the **Support Files** folder from the list of folders, double-click on the **HPD Files** folder, and then double-click on the **Domestic** folder. For international products, double-click on the **International** folder.
7. A list of TROY fonts will be listed within the **List of Fonts** section. Click on **Select All** to highlight all available fonts, and then click on **OK**. A processing window may appear while the installation process proceeds. Individual fonts may be selected if all the fonts are not needed.
8. Repeat Steps 5 through 7 to install the barcode screen fonts. Double-click on the **Support Files** folder, double-click on the **HPD Files** folder, and then double-click on the **Barcode** folder. Within the **List of Fonts** section, click on **Select All** to highlight all available barcode screen fonts, and then click on **OK**. A processing window may appear while the installation process proceeds.
9. Close all remaining open windows. The TROY screen fonts are now installed.

NOTE: For International customers, the International numeric fonts are not resident on the TROY Font Card. These fonts are located on the TROY Font Card Kit CD in the “\Support Files\HPD Files\International\Fonts” folder and can be added to the TROY Font Card using the TROY Printer Utility – Download Soft Fonts Option. These fonts are designed as non-scalable bitmapped fonts.

STEP 4: Install the TROY Software for Microsoft® Windows™

Install the TROY Printer Utility for Windows™ 98SE, ME, 2000, XP, Server 2003

The TROY Printer Utility provides useful functions for testing your TROY Security Printing Solution through Microsoft® Windows™. This utility takes advantage of the Windows-installed printer collection, allowing access to any printer installed in the Windows environment. The printer connection may be local, network, or direct network connected. The TROY Printer Utility should be installed on the administrator's computer only. Some of the features of the TROY Printer Utility are provided for special applications and may not be intended for general use. Refer to the TROY Font Card Kit User's Guide, Section 2 – *Using the TROY Printer Utility* for more information.

1. Close all applications before installing the TROY Printer Utility application.
2. Insert the *TROY Font Card Kit* CD into your CD-ROM drive.
3. From the *Start* menu, click on *Run*, and then click on *Browse*.
4. Click on the down-arrow in the *Look In* box at the top of the window, and then click on the drive letter designated for the CD-ROM drive on your computer.
5. Double-click on the *TROY Printer Utility* folder.
6. Click on the file named *setup.exe*, click on *Open*, and then click on *OK* to start the installation process. Follow the screen prompts to complete the installation.

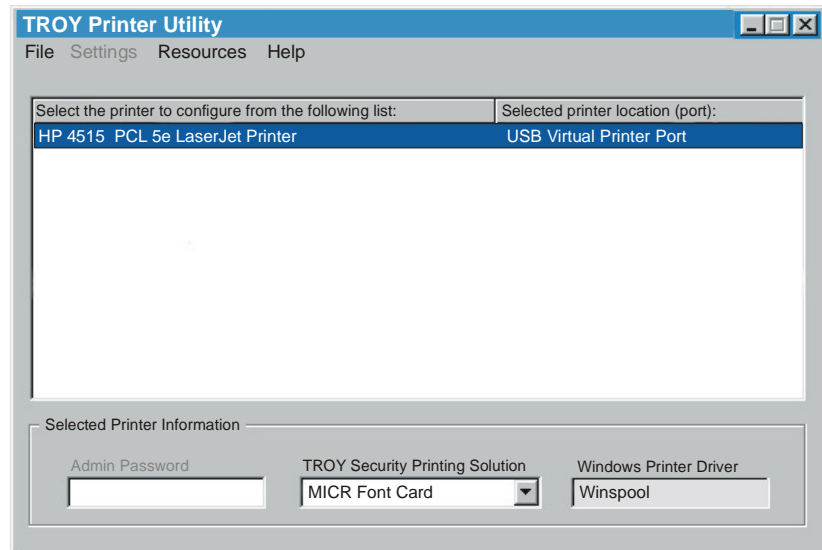
NOTE: The TROY Printer Utility can be removed using the uninstall procedures located in Section 4 of the TROY Font Card Kit User's Guide.

STEP 5: Test the TROY Font Support for Microsoft® Windows™

To verify that the TROY Windows font support files were properly installed on your system, demonstration documents are provided through the TROY Printer Utility in Windows that can be printed out to visually identify all security and/or barcode fonts downloaded to your printer. Make sure your printer is properly setup, powered ON, and is online before printing the Windows Security Font and/or Windows Barcode Font Demonstration page(s).

TO PRINT THE TROY SECURITY FONT / BARCODE FONT DEMONSTRATION PAGE(S):

1. From the TROY Printer Utility *Main Window*, click on the printer you wish to manage, and then verify that the correct TROY Security Printing Solution is selected from the drop-down list at the bottom of the window.
2. From the *Main Window*, click on *File*, *Print*, and then click on *Windows Security (MICR) Font Demo*. The printer will automatically print the Windows Security Font Demonstration page.
3. Compare the actual TROY security fonts (the actual fonts generated by your printing system) shown in the right-hand column with the facsimile image of these fonts printed in the center column (a digitized image designed to look exactly like the actual fonts correctly generated by your system – refer to the example shown on the next page).



If the support files were properly installed, the actual TROY security and/or barcode fonts displayed in the right-hand column should appear identical to the facsimile fonts displayed in the center column. If the actual fonts do not match the facsimile fonts printed on the demonstration document (fonts not printed correctly or fonts missing on the printout), review the installation steps in this document. If further assistance is required, contact TROY Technical Support.

Accessing TROY Fonts Using Non-Windows Applications

If you are using a non-Windows application to print MICR documents, the escape sequence for each font must be programmed into the application in order to “call” each of the selected fonts. The <Esc> character is ASCII character number 27 (hexadecimal number 1B). Refer to Section 3 – *Using TROY Fonts* in the *TROY Font Card Kit User’s Guide* for the specific escape sequence used to call each TROY font.

TROY Security Font Demonstration Page (not to scale)

TROY Security Font Collection

Microsoft Windows Test Page

=====

This document displays how the TROY Security Font Collection should appear when printed through Microsoft Windows (Facsimile Font Image) and how they actually print through your Microsoft Windows printer driver configuration (Actual Printed Font) to a TROY Security Printing Solution.

Compare the fonts printed in the Facsimile Font Image column of this page to the fonts printed in the Actual Printed Font column. If the Windows support files (PCM) were properly installed into the Hewlett Packard PCL 5e printer driver, the fonts in the two columns should match. If the fonts in both columns do not match (fonts in the Actual Printed Fonts column not printed correctly or missing from this page), review the Windows Support File installation steps in the user documentation. If further assistance is needed, please contact TROY Technical Support 1-800-332-6427, or email techsupport@troypgroup.com

<u>Font Name</u>	<u>Facsimile Font Image</u>	<u>Actual Printed Font</u>
TROY E-13B	1 2 3 4 5 6 7 8 9 0	1 2 3 4 5 6 7 8 9 0
TROY CMC7	1 2 3 4 5 6 7 8 9 0	1 2 3 4 5 6 7 8 9 0
TROY ECF	0 1 2 3 4 5 6 7 8 9 0 <small>ZERO ONE TWO THREE FOUR FIVE SIX SEVEN EIGHT NINE ZERO</small>	0 1 2 3 4 5 6 7 8 9 0 <small>ZERO ONE TWO THREE FOUR FIVE SIX SEVEN EIGHT NINE ZERO</small>
TROY LCF	1 2 3 4 5 6 7 8 9 0 <small>ONE TWO THREE FOUR FIVE SIX SEVEN EIGHT NINE ZERO</small>	1 2 3 4 5 6 7 8 9 0 <small>ONE TWO THREE FOUR FIVE SIX SEVEN EIGHT NINE ZERO</small>
TROY SCF	1 2 3 4 5 6 7 8 9 0 <small>ONE TWO THREE FOUR FIVE SIX SEVEN EIGHT NINE ZERO</small>	1 2 3 4 5 6 7 8 9 0 <small>ONE TWO THREE FOUR FIVE SIX SEVEN EIGHT NINE ZERO</small>
TROY HELV Rev	1 2 3 4 5 6 7 8 9 0	1 2 3 4 5 6 7 8 9 0
TROY MICROMP.....MP.....MPMP.....MP.....MP
TROY OCRA	1 2 3 4 5 6 7 8 9 0 A B C D	1 2 3 4 5 6 7 8 9 0 A B C D
TROY OCRB	1 2 3 4 5 6 7 8 9 0 A B C D	1 2 3 4 5 6 7 8 9 0 A B C D
TROY Security	1 2 3 4 5 6 7 8 9 0 <small>ONE TWO THREE FOUR FIVE SIX SEVEN EIGHT NINE ZERO</small>	1 2 3 4 5 6 7 8 9 0 <small>ONE TWO THREE FOUR FIVE SIX SEVEN EIGHT NINE ZERO</small>

NOTE: The TROY Microprint Font is not supported for the TROY Font Card.

Obtaining Technical Assistance

The TROY Printer Utility provides several help screens to guide you through the available features and functions of your TROY Security Printing Solution. TROY technical support is available to assist you with any questions concerning the setup, operation, and maintenance of your Security Printing Solution. Specific system information about your TROY product configuration is available through the TROY Printer Utility. You are also encouraged to visit the TROY web site for the latest FAQs (Frequently Asked Questions), information on the latest TROY products, or for ordering MICR toner and other printing supplies.

TO VIEW TECHNICAL SUPPORT INFORMATION:

From the *Main Window*, click on *Help*, and then click on *Technical Support* to view the TROY Technical Support HTML page for telephone numbers and hours of business.

TO VIEW INFORMATION ON THE TROY WEB SITE:

From the *Main Window*, click on *Help*, and then click on *TROY on the Web* to access the TROY web site. Click on the *Support and Downloads* button at the top of the web page to view the available topics. You can access the TROY web site directly from your web browser at <http://www.troygroup.com>.

Reference Material

- TROY MICR Basics Handbook (provided on *TROY Font Card Kit* CD)
- TROY Font Card User's Guide (provided on *TROY Font Card Kit* CD)
- Hewlett-Packard Getting Started Guide (provided on the *Hewlett-Packard* CD supplied with your printer)
- Hewlett-Packard Printer User's Guide (provided on the *Hewlett-Packard* CD supplied with your printer)