

# READ ME FIRST

## Installation Instructions for TROY Font DIMM Printer and Font DIMM Kit

(For use with Hewlett-Packard LaserJet 1300, 1320, 2300, 4100, 4200, 4300, 8100, 8150, and 9000 Printers)

### Introduction

Use the *TROY Font DIMM Printer and Font DIMM Kit* CD to install the required Hewlett-Packard LaserJet printer drivers and TROY support files. To ensure successful installation of your TROY Font DIMM product, perform the following steps in sequential order. The documentation and installation files contained on the *TROY Font DIMM Printer and Font DIMM Kit* CD will be needed in the event that your printer is reinstalled in a new location or after service has been performed.

### Package Contents

- TROY Font DIMM
- TROY Font DIMM Printer and Font DIMM Kit CD
- TROY Security Printing Solutions Information Sheet
- TROY Software License Agreement
- TROY MICR Document Template
- TROY Font DIMM Kit User's Guide (provided in PDF format on the CD)
- TROY Font DIMM Kit Installation Guide (provided in PDF format on the CD)
- TROY MICR Basics Handbook (provided in PDF format on the CD)
- TROY Font DIMM Printer and Font DIMM Kit Quick-Start Guide (this document)

## STEP 1: Install the TROY MICR Toner Cartridge and TROY Font DIMM

1. Be sure to install a TROY MICR toner cartridge (purchased separately from TROY) in the same manner as described for the standard Hewlett-Packard toner cartridge (refer to your Hewlett-Packard *Getting Started Guide* for details). A MICR toner cartridge must be installed in your printer in order to print MICR documents. For best results, TROY MICR toner cartridges are recommended. TROY's high-quality MICR toner is specifically designed for the MICR fonts contained on your TROY Font DIMM.

**NOTE:** If you purchased a TROY Font DIMM printer, skip the following step.  
The Font DIMM is already installed in the printer.

2. Install the TROY Font DIMM (supplied with your TROY Font DIMM Solution) by using the TROY Font DIMM Installation Guide provided in PDF format on the *TROY Font DIMM Printer and Font DIMM Kit* CD. The TROY Font DIMM must be installed before proceeding to Step #2 on the next page.



---

## STEP 2: Install the HP PCL 5e Printer Driver for Microsoft® Windows™

**NOTE:** Use only the *TROY Font DIMM Printer and Font DIMM Kit* CD to install the Hewlett-Packard PCL 5e printer driver designated for your Hewlett-Packard printer. Some software screens may differ slightly in appearance between operating systems.

**NOTE:** Some of the steps listed below may differ slightly depending on your operating system.

1. Close all applications before installing the HP PCL 5e printer driver.
2. Insert the *TROY Font DIMM Printer and Font DIMM Kit* CD into your computer CD drive.
3. Before beginning the installation process, you will need to know the operating system you are using on your computer. If you already know the operating system you are using, proceed directly to step #4. If you are not sure, right-click on *My Computer* (located on the Windows desktop), and then click on *Properties* to view the type of operating system installed on your computer.
4. From the *Start* menu, click on *Settings*, and then click on *Printers*.
5. Double-click on *Add Printer*, click on *Next*, choose *Local Printer*, and then click on *Next*. If you are using Windows 2000/XP, skip down to Step 12, and then proceed with Steps 6 through 11.
6. From the *Add Printer Wizard* window, click on *Have Disk*.
7. From the *Install From Disk* window, click on *Browse*.
8. From the *Open* window, click on the down-arrow in the *Drives* box to select the CD-ROM drive on your computer.
9. Double-click on the appropriate folder for the operating system you are using (e.g., Win98, etc.).
10. Double-click on the appropriate subfolder for the model printer you are using (e.g., 4200, 9000). If applicable for your model of printer, be sure to select either the USB or standard parallel (LPT1) printer. Click on *OK* to close the *Open* window, and then click on *OK* to close the *Install From Disk* window.
11. Select the appropriate printer driver for your printer model, and then click on *Next* to continue the driver installation. You will be given the choice to either replace or keep the existing driver. It is recommended that you always replace the existing driver. Click on *Next* to continue. If you are using Windows 2000/XP, skip down to Step 13.

**NOTE:** Two versions of the 2300 printer driver (2300 and 2300L) are contained on the *TROY Font DIMM Printer and Font DIMM Kit* CD. Use only the 2300 printer driver when installing the *TROY Font DIMM*. The 2300L printer driver does not support the *TROY Font DIMM*.

12. Select the appropriate printer port from the displayed list (usually LPT1), and then click on *Next* to continue. If you are using Windows 2000/XP, go back and perform Steps 6 through 11 to complete the driver installation. Otherwise, for Windows 98SE/ME operating systems, the printer name will be highlighted.
13. For easy printer identification, it is recommended that you change the highlighted Hewlett-Packard printer name to the name of the TROY printer you are installing (e.g., *TROY MICR 4200 Printer*) by typing over the highlighted printer name. If you want to use this printer as your default printer, be sure to select this printer as the default printer. If you are using Windows 2000/XP, choose to either share or not to share your printer over the network.
14. Click on *Yes* to print a test page to verify that your printer driver was installed correctly, and then click on *Next* to continue.
15. Click on *Finish* to complete the installation. The printer driver installation will proceed automatically and add the printer icon to the printer folder.

## STEP 3: Install the TROY Support Files for Microsoft® Windows™

For 1320 Printer see page 5

**NOTE:** The Hewlett-Packard PCL 5e printer driver must be installed on the host computer prior to loading the TROY support files (refer to STEP 2 on the previous page).

The TROY metrics file contains the required escape sequences that are used to “call” the TROY security and/or optional barcode fonts installed in your TROY Security Printing Solution (via the TROY Font DIMM). When properly installed, the TROY metrics file will be associated with the PCL 5e printer driver used by your Hewlett-Packard printer to enable printing of the actual fonts installed in the printer. By associating the metrics file with the printer driver, the TROY TrueType screen fonts will be automatically replaced with the actual TROY fonts at print time. If the TROY metrics file is not properly installed, then the TROY TrueType screen fonts will print instead of the actual TROY installed printer fonts.

### Install the TROY Metrics File for Windows™ 98SE, ME, 2000, XP Operating Systems

1. Close all applications before installing the TROY Font support files.
2. Insert the *TROY Font DIMM Printer and Font DIMM Kit* CD into your computer CD-ROM drive.
3. From the Microsoft Windows *Start* menu, click on *Settings*, and then click on *Printers*.
4. Right-click on your HP printer icon, and then click on *Properties* from the pull-down menu. If multiple printers are installed, make sure the correct printer icon is selected that corresponds to your HP printer.
5. Click on the *Configure* tab located at the top of the *Properties* window.
6. Within the *Other Options* category, click on the *More* button. Some printer driver versions may not display the *Other Options* category. If this is the case, simply skip to the next step.
7. Within the *Fonts* category, place a check mark in the *Font DIMMs* checkbox, and then click on the *Configure* button (with some printer driver software versions, the *Configure* button may already be “clicked”). A new window will open labeled *Configure Font DIMMs*.
8. Click on the *Add* button to open the *Add Font DIMM* window.
9. Click on the *Browse* button to open a Windows Explorer-style window. Click on the down-arrow in the *Drives* box to select the CD-ROM drive on your computer. Double-click on the *Support Files* folder from the list of folders, double-click on the *HPD Files* folder, and then double-click on the *Domestic* folder. For international products, double-click on the *International* folder.
10. Click on the file (located in the left-hand window) named *TroySEC.hpd* or *TroySECINTL.hpd* (for International customers), and then click on *Open* or *OK* (the displayed window may vary depending on the operating system being used). With some printer drivers, the *Add Font DIMM* window will appear. If this window appears, click on *OK* to close the window.
11. Within the *Configure Font DIMMs* window, verify the installation by clicking on the *Font DIMM Name: TROY Security Font Collection* or *TROY International Security Font Collection* listed under *Installed DIMMs*. Within the *Fonts* list, the TROY E-13B (enabled) along with other TROY fonts will be displayed.
12. Repeat Steps 9 through 11 to install the barcode fonts. Double-click on the *Support Files* folder, the *HPD Files* folder, and the *Barcode* folder, and then select the *TroyBAR.hpd* file. Verify the installation by clicking on the *Font DIMM Name: TROY Barcode Font Collection* listed under *Installed DIMMs*. Within the *Fonts* list, the TROY barcode fonts will be displayed.
13. Close all remaining open windows. Please refer to the TROY Font DIMM Printer and Font DIMM Kit User’s Guide, Section 3 – *Using TROY Fonts* before using the installed fonts.

---

## Install the TROY Screen Fonts for Windows™ 98SE, ME, 2000, XP Operating Systems

In addition to the TROY *printer* fonts that are permanently programmed into your TROY Font DIMM, the TROY *screen* fonts have been developed for display use only as a visual reference and for making positional adjustments to the MICR line. The TROY *screen* fonts display differently than the actual *printer* fonts to prevent unauthorized printing using the MICR *screen* fonts on other Windows-installed printers.

If the E-13B MICR *screen* font is used for printing, the inversely printed (white characters on black background) MICR *screen* font will not be readable by the bank reader/sorter machines. The uniquely displayed *screen* fonts ensure that the MICR font printed on your MICR documents is generated by a TROY Security Printing Solution and not from a Windows TrueType™ *screen* font. The TROY *screen* fonts are provided on the **TROY Font DIMM Printer and Font DIMM Kit** CD supplied with your TROY Font DIMM Kit.

**NOTE:** Windows 2000/XP operating systems do not require installation of the TROY screen fonts.

1. Close all applications before installing the TROY support files.
2. Insert the **TROY Font DIMM Printer and Font DIMM Kit** CD into your computer CD-ROM drive.
3. From the **Start** menu, click on **Settings**, and then click on **Control Panel**.
4. Double-click on the **Fonts** folder icon.
5. Click on **File**, and then click on **Install New Font...** A new window labeled **Add Fonts** will open and then a Windows Explorer-style window will open.
6. Click on the down-arrow in the **Drives** box to select the CD-ROM drive on your computer. Double-click on the **Support Files** folder from the list of folders, double-click on the **HPD Files** folder, and then double-click on the **Domestic** folder. For international products, double-click on the **International** folder.
7. A list of TROY fonts will be listed within the **List of Fonts** section. Click on **Select All** to highlight all available fonts, and then click on **OK**. A processing window may appear while the installation process proceeds. Individual fonts may be selected if all the fonts are not needed.
8. Repeat Steps 5 through 7 to install the barcode screen fonts. Double-click on the **Support Files** folder, double-click on the **HPD Files** folder, and then double-click on the **Barcode** folder. Within the **List of Fonts** section, click on **Select All** to highlight all available barcode screen fonts, and then click on **OK**. A processing window may appear while the installation process proceeds.
9. Close all remaining open windows. The TROY screen fonts are now installed.

**NOTE:** For International customers, the International numeric fonts are not resident on the TROY Font DIMM. These fonts are located on the **TROY Font DIMM Printer and Font DIMM Kit** CD in the “\Support Files\HPD Files\International\Fonts” folder and can be added to the TROY Font DIMM using the TROY Printer Utility – Download Soft Fonts Option. These fonts are designed as non-scalable bitmapped fonts.

## Install the TROY Metrics File for HP 1320 Model Printers Only

1. Close all applications before installing the TROY Font support files.
2. Insert the *TROY Font DIMM Printer and Font DIMM Kit* CD into your computer CD-ROM drive.
3. From the Microsoft Windows Start menu, click on *Settings*, and then click on *Printers*.
4. Right-click on your HP printer icon, and then click on *Properties* from the pull-down menu. If multiple printers are installed, make sure the correct printer icon is selected that corresponds to your HP printer.
5. Click on the *Device Settings* tab located at the top of the *Properties* window.
6. Click on *External Font* (under the *Font Substitution Table* category), and then click on the *Properties* button.
7. Click on the *Browse* button to open the drive selection window. Double-click on the appropriate drive letter to select the CD-ROM drive on your computer.
8. Double-click on the *Support Files* folder from the list of folders, double-click on the *PCM Files* folder, double-click on the *Domestic* folder, and then click on *OK* to close the drive selection window. For international products, double-click on the *International* folder.
9. Use the SHIFT key to select all the fonts located in the left-hand window named *TROY Auto-Protect*, *TROY PCM7*, etc., and then click on *Add* to add those fonts. If you want to add an individual font, just highlight that specific font name and click on the *Add* button. All the added fonts should be displayed in the right-hand window.

**NOTE:** If the barcode option was purchased, repeat Steps 8 through 10. Choose the TROY Barcode PCM file from the Barcode folder.

10. Close all remaining open windows. Please refer to the TROY Font DIMM Printer and Font DIMM Kit User's Guide, Section 3 – *Using TROY Fonts* before using the installed fonts.

**NOTE:** Windows 2000/XP operating systems do not require installation of the TROY screen fonts.

## **STEP 4: Install the TROY Software for Microsoft® Windows™**

### **Install the TROY Printer Utility for Windows™ 98SE, ME, 2000, XP, Server 2003**

The TROY Printer Utility provides useful functions for testing your TROY Security Printing Solution through Microsoft® Windows™. This utility takes advantage of the Windows-installed printer collection, allowing access to any printer installed in the Windows environment. The printer connection may be local, network, or direct network connected. The TROY Printer Utility should be installed on the administrator's computer only. Some of the features of the TROY Printer Utility are provided for special applications and may not be intended for general use. Refer to the TROY Font DIMM Printer and Font DIMM Kit User's Guide, Section 2 – *Using the TROY Printer Utility* for more information.

1. Close all applications before installing the TROY Printer Utility application.
2. Insert the *TROY Font DIMM Printer and Font DIMM Kit* CD into your CD-ROM drive.
3. From the *Start* menu, click on *Run*, and then click on *Browse*.
4. Click on the down-arrow in the *Look In* box at the top of the window, and then click on the drive letter designated for the CD-ROM drive on your computer.
5. Double-click on the *TROY Printer Utility* folder.
6. Click on the file named *setup.exe*, click on *Open*, and then click on *OK* to start the installation process. Follow the screen prompts to complete the installation.

**NOTE:** The TROY Printer Utility can be removed using the uninstall procedures located in Section 4 of the TROY Font DIMM Printer and Font DIMM Kit User's Guide.

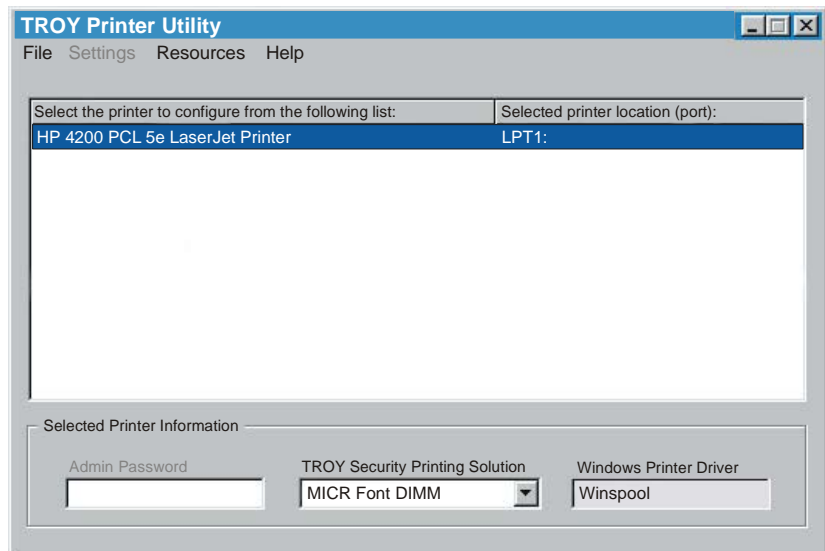


## STEP 5: Test the TROY Font Support for Microsoft® Windows™

To verify that the TROY Windows font support files were properly installed on your system, demonstration documents are provided through the TROY Printer Utility in Windows that can be printed out to visually identify all security and/or barcode fonts downloaded to your printer. Make sure your printer is properly setup, powered ON, and is online before printing the Windows Security Font and/or Windows Barcode Font Demonstration page(s).

### TO PRINT THE TROY SECURITY FONT / BARCODE FONT DEMONSTRATION PAGE(S):

1. From the TROY Printer Utility **Main Window**, click on the printer you wish to manage, and then verify that the correct TROY Security Printing Solution is selected from the drop-down list at the bottom of the window.
2. From the **Main Window**, click on **File, Print**, and then click on **Windows Security (MICR) Font Demo**. The printer will automatically print the Windows Security Font Demonstration page.



3. Compare the actual TROY security fonts (the actual fonts generated by your printing system) shown in the right-hand column with the facsimile image of these fonts printed in the center column (a digitized image designed to look exactly like the actual fonts correctly generated by your system – refer to the example shown on the next page).

If the support files were properly installed, the actual TROY security and/or barcode fonts displayed in the right-hand column should appear identical to the facsimile fonts displayed in the center column. If the actual fonts do not match the facsimile fonts printed on the demonstration document (fonts not printed correctly or fonts missing on the printout), review the installation steps in this document. If further assistance is required, contact TROY Technical Support.

### **Accessing TROY Fonts Using Non-Windows Applications**

If you are using a non-Windows application to print MICR documents, the escape sequence for each font must be programmed into the application in order to “call” each of the selected fonts. The <Esc> character is ASCII character number 27 (hexadecimal number 1B). Refer to Section 3 – **Using TROY Fonts** in the *TROY Font DIMM Printer and Font DIMM Kit User’s Guide* for the specific escape sequence used to call each TROY font.

**TROY Security Font Demonstration Page (not to scale)**

**TROY Security Font Collection**

**Microsoft Windows Test Page**

=====

This document displays how the TROY Security Font Collection should appear when printed through Microsoft Windows (Facsimile Font Image) and how they actually print through your Microsoft Windows printer driver configuration (Actual Printed Font) to a TROY Security Printing Solution.

Compare the fonts printed in the Facsimile Font Image column of this page to the fonts printed in the Actual Printed Font column. If the Windows support files (PCM) were properly installed into the Hewlett Packard PCL 5e printer driver, the fonts in the two columns should match. If the fonts in both columns do not match (fonts in the Actual Printed Fonts column not printed correctly or missing from this page), review the Windows Support File installation steps in the user documentation. If further assistance is needed, please contact TROY Technical Support 1-800-332-6427, or email techsupport@troygroup.com

<u>Font Name</u>	<u>Facsimile Font Image</u>	<u>Actual Printed Font</u>
TROY E-13B	1 2 3 4 5 6 7 8 9 0	1 2 3 4 5 6 7 8 9 0
TROY CMC7	1 2 3 4 5 6 7 8 9 0	1 2 3 4 5 6 7 8 9 0
TROY ECF	<b>0 1 2 3 4 5 6 7 8 9 0</b> <small>ZERO ONE TWO THREE FOUR FIVE SIX SEVEN EIGHT NINE ZERO</small>	<b>0 1 2 3 4 5 6 7 8 9 0</b> <small>ZERO ONE TWO THREE FOUR FIVE SIX SEVEN EIGHT NINE ZERO</small>
TROY LCF	<b>1 2 3 4 5 6 7 8 9 0</b> <small>ONE TWO THREE FOUR FIVE SIX SEVEN EIGHT NINE ZERO</small>	<b>1 2 3 4 5 6 7 8 9 0</b> <small>ONE TWO THREE FOUR FIVE SIX SEVEN EIGHT NINE ZERO</small>
TROY SCF	1 2 3 4 5 6 7 8 9 0 <small>ONE TWO THREE FOUR FIVE SIX SEVEN EIGHT NINE ZERO</small>	1 2 3 4 5 6 7 8 9 0 <small>ONE TWO THREE FOUR FIVE SIX SEVEN EIGHT NINE ZERO</small>
TROY HELV Rev	1 2 3 4 5 6 7 8 9 0	1 2 3 4 5 6 7 8 9 0
TROY MICRO	<small>MP MP MP</small>	<small>MP MP MP</small>
TROY OCRA	1 2 3 4 5 6 7 8 9 0 A B C D	1 2 3 4 5 6 7 8 9 0 A B C D
TROY OCRB	1 2 3 4 5 6 7 8 9 0 A B C D	1 2 3 4 5 6 7 8 9 0 A B C D
TROY Security	<b>1 2 3 4 5 6 7 8 9 0</b> <small>ONE TWO THREE FOUR FIVE SIX SEVEN EIGHT NINE ZERO</small>	<b>1 2 3 4 5 6 7 8 9 0</b> <small>ONE TWO THREE FOUR FIVE SIX SEVEN EIGHT NINE ZERO</small>

**NOTE: The TROY Microprint Font is not supported for the TROY Font Memory Card.**



## Obtaining Technical Assistance

The TROY Printer Utility provides several help screens to guide you through the available features and functions of your TROY Security Printing Solution. TROY technical support is available to assist you with any questions concerning the setup, operation, and maintenance of your Security Printing Solution. Specific system information about your TROY product configuration is available through the TROY Printer Utility. You are also encouraged to visit the TROY web site for the latest FAQs (Frequently Asked Questions), information on the latest TROY products, or for ordering MICR toner and other printing supplies.

### TO VIEW TECHNICAL SUPPORT INFORMATION:

From the *Main Window*, click on *Help*, and then click on *Technical Support* to view the TROY Technical Support HTML page for telephone numbers and hours of business.

### TO VIEW INFORMATION ON THE TROY WEB SITE:

From the *Main Window*, click on *Help*, and then click on *TROY on the Web* to access the TROY web site. Click on the *Support and Downloads* button at the top of the web page to view the available topics. You can access the TROY web site directly from your web browser at <http://www.troypgroup.com>.

## Reference Material

- TROY MICR Basics Handbook (provided on *TROY Font DIMM Printer/Font DIMM Kit* CD)
- TROY Font DIMM Installation Guide (provided on *TROY Font DIMM Printer/Font DIMM Kit* CD)
- TROY Font DIMM Kit User's Guide (provided on *TROY Font DIMM Printer/Font DIMM Kit* CD)
- Hewlett-Packard Getting Started Guide (provided in the *TROY Font DIMM Kit* Startup Package)
- Hewlett-Packard Printer User's Guide (provided on the *Hewlett-Packard* CD supplied with your printer)